



01 **Reliability**

02 **Mobility**

03 **Efficiency**

04 **Security**

05 **Speed**

06 **Digitization**

07 **Innovation**

08 **Integration**

09 **Service**

PrioCom Compass

mission-critical Push-To-Talk on 4G/5G

A Communication must always work

As mobile virtual network operator (MVNO) for mission-critical communication, we offer Quality of Service with priority on the national T-Mobile network. With over 4,700 mast locations, the T-Mobile network offers the highest data capacity of up to 450 Mbps download and the best national 4G/4G+ coverage. This guarantees communication both regionally and nationally.

Network >

prio-com.nl/en/network/



up to
450 Mbps
download on
4G/4G+

Check the range and speed that apply to your organization!

Check the range >

prio-com.nl/en/t-mobile-coverage-map



B Priority

The 4G network has more than enough capacity to give constant access under all circumstances. On top of this, we can provide you with the highest data priority levels at customer level. The priority module gives users priority on the T-Mobile network in the event of escalations.



D Push-to-Talk Quality of Service

The Push-to-Talk service is integrated into the core of the T-Mobile network. The connection runs through a private access point, via a fixed IP address and is also encrypted. As a result, the Push-to-Talk traffic is reliable, which means we can guarantee a high Quality of Service.

C Redundancy

The T-Mobile network is fully redundant in terms of both network and power supply.

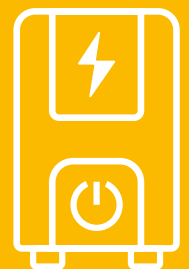
Also read
Emergency power supply



E Emergency power supply

T-Mobile has provided all its antenna locations with emergency power supply, which gives telecom providers extra time to take measures to ensure that an affected region will not be without mobile coverage. In the event of a power failure, T-Mobile can keep its network working for one hour for calls, texting and 4G data services.

Also read **Redundancy**



1 hour
Emergency power calls | texting | 4G



In excess of
4.700
Mast locations

A Regional or national operation

Do you need nationwide coverage enabling your employees to contact each other in remote areas at the touch of a button? We can offer you this geographical independence.

Our Push-to-Talk solution lets you communicate regionally, nationally or throughout Europe. Any time, any place, with priority and guaranteed availability!

Push-to-Talk



Contact at the touch of a button



B Devices

We work closely with various hardware suppliers to guarantee that our Push-to-Talk service works optimally. We recommend a selected range of (ATEX and non-ATEX) devices and accessories that have been extensively tested, are rugged and have a high-quality two-way radio look & feel, offering best performance using the Push-to-Talk application.



Devices



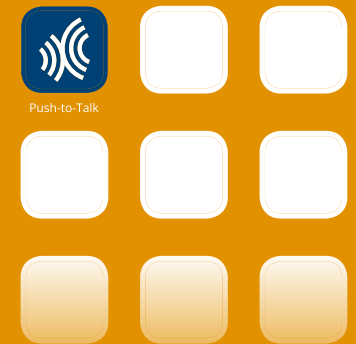
prio-com.nl/en/device-certification/

C Accessories

The devices can be enhanced by a range of company and industry-specific accessories such as surveillance headsets, remote speakers, desk chargers and multi-chargers, letting users in specific challenging work environments and shifts communicate efficiently and securely.

D Smart Device as business driver

Smart devices are inseparable to the new way of working. This lets you use other work-related business applications on your device - in addition to a Push-to-Talk solution. Our rugged smart devices, including the Push-to-Talk application, can be used at any location.





sending documents and data

A Digitizing workflows

In addition to Push-to-Talk, you can also use business applications on our rugged Android devices, enabling you to digitize workflows. For example, requesting and sending documents, or digitally providing and processing data. Our service in this way contributes to significantly increase work efficiency and improve your customer service.



C Management at application level

Mobile Device Management greatly simplifies your mobile device and application management and security. Through Mobile Device Management, our business partner ensures that equipment is only used for applications that are required for safe and efficient work. In challenging work environments, your employees want fewer devices so they can keep their hands on the job. Software updates can take place remotely on devices active in the field. This saves management considerable time and complications.

B One device

In challenging work environments, your employees want a minimum of devices so they can keep their hands on the job. Having a radio, a beeper and a mobile phone is a burden. Less is more! Android smart devices are inseparable to the new way of working. This lets you run other work-related business applications on your Android smart device - in addition to a Push-to-Talk solution - and reduce the number of devices for your employees. Our devices, including the critical communication application, can be used at any geographic location. This considerably reduces the Total Cost of Ownership (TCO).



one smart device making radio and beeper obsolete

D Scalability

Our service can be deployed flexibly and is easily expanded for more employees. The group layouts, individual contacts and emergency groups are set up for your company based on your specific business situation. Management takes place at application level and adjustments can be made remotely so devices can remain in the field. The service offered is in subscription form per user and therefore does not require a high initial investment in your own network. The solution grows with your company, as you increase the number of users within your organization.



safe critical communication using a secure part of the T-Mobile network



A Integration into mobile network

PrioCom offers mission-critical communication on 4G as a service. Mission critical means that a person's safety depends on the ability to communicate. Public internet is not sufficient for such a critical communication connection, with too little control over it. The PrioCom service is directly integrated into the core of the mobile network and a PrioCom user's connection does not travel on the internet, but by means of a private, securely protected part of the T-Mobile network. As a result, your data remains protected from public internet and has a guaranteed reliable and stable communication connection with a fast call set-up time.

B Encryption of data

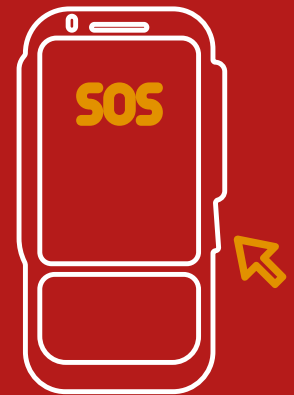
Both the connection and data are encrypted. The data is encrypted preventing it from being monitored.



connection and data are **encrypted**

C Alarm button and emergency call

You can make an emergency call when colleagues are in danger. We provide this alarming functionality on smart Android devices in the form of a physical emergency button. The moment your employee presses the emergency button, a voice connection is instantly made. The connection with the control room has priority and is open so they can listen. This speeds up response time so help can be immediately deployed in the event of an emergency.



D Priority contact with the control room

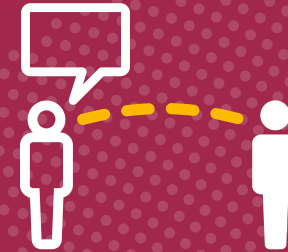
In the event of an emergency call, the control room can instantly listen enabling help to be deployed more rapidly. Your location is determined via the dispatcher and other employees can be directed to assist through a group message. This means help can be provided quickly and effectively so that your employees can work safely.



A Push-to-Talk communication

In business operations where work is performed under time pressure with a major risk to compromising business results, continuity or safety, it is essential to be able to communicate with each other without having to think twice. Push-to-talk technology fulfils these needs by providing a direct, reliable and secure connection to a person or group at the touch of a button.

A mobile telephone call is not a good alternative: too much time is lost in reaching an employee, it cannot offer efficient group communication and it cannot be controlled centrally from a control room. Radio systems traditionally offer Push-to-Talk communication but have serious limitations such as short range, being data incompatible etc. The PrioCom Push-to-Talk service makes sub-second group communication available nationwide with utmost reliability and speed.



fast call
setup time
0.5 sec

B Fast call setup time

T-Mobile is the best mobile network in the Netherlands with the highest data capacity, guaranteeing a high speed. In addition, PTT traffic is handled within the core of the T-Mobile network in a secure part guaranteeing a fast call set-up time of 0.5 seconds. Every second counts!

C Physical Push-to-Talk button

Our smart devices all have a physical Push-to-Talk button, so you don't have to press, swipe or search for an App on the screen. In a business critical operation, a physical PTT button is a "must" for instant communication. Moreover, the rugged device can also be operated when wearing work gloves, just like you are used to with two-way radios.



A Reduce paper flows

As well as Push-to-Talk, you can also deploy business applications on our rugged Android devices, making these available to mobile devices letting you digitize your workflows. For example, requesting and sending documents or digitally providing and processing data. Our service herewith contributes to significantly increase work efficiency and improve your customer service.



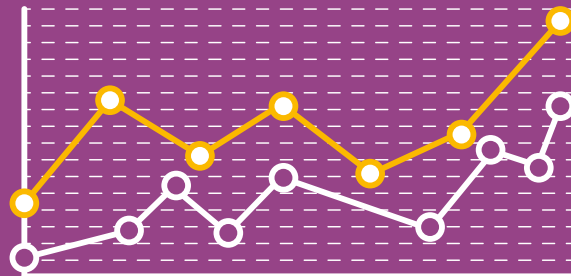
mobile sending of documents and data

B Save on costs and improve customer performance

By digitizing work processes you can deploy your employees more efficiently. This saves money and contributes to higher labour productivity of your working capital.



more efficient use of staff



A Assurance based on industry standard

Our Push-to-Talk application is built according to industry standard (OMA/3GPP) and is therefore suitable for interoperability with existing two-way radio networks, new private LTE systems and is ready for migration from 4G to 5G.



interoperable
with existing
**two-way radio
networks**



You can invest now and be sure of a future-proof solution that continuously optimizes your business process and strengthens your competitive position.



3G

download
384Kbps
2001



4G

download
100Mbps
2009



5G

download
10Gbps
2020

ready for
migration from 4G to 5G



B Rugged Android Devices as business driver

Rugged Android devices are inseparable to the new way of working. This lets you run other work-related business applications on your device - in addition to the Push-to-Talk solution. Our devices, including the Push-to-Talk application, can be used anytime, anywhere.



no
**geographical
limitations**

A Combine current with new technology

You can connect our critical communication service to existing two-way radio networks, new private LTE systems and it is ready for migration from 4G to 5G. This means you can invest now in a future-proof solution.

connects to
existing
radio
networks



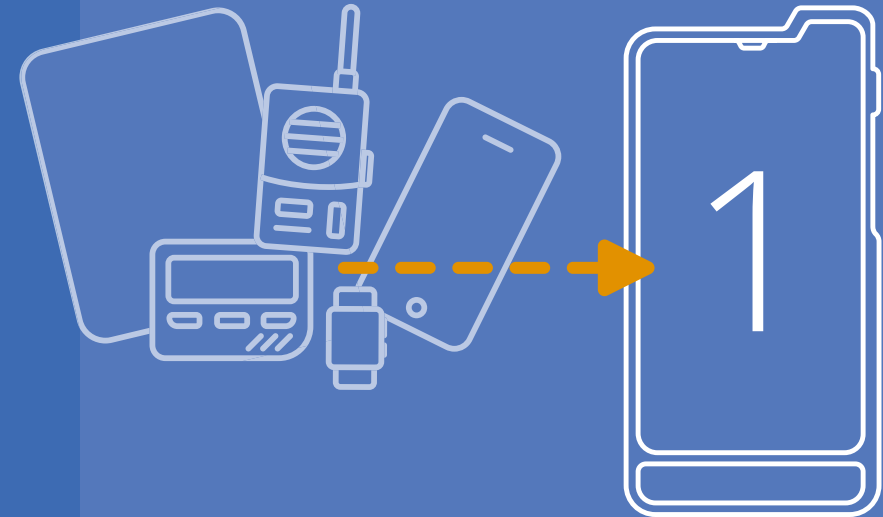
B On-site measurements

Besides the Push-to-Talk service PrioCom also provides for on-site measurements. In cooperation with T-Mobile, we measure the coverage on location. Outdoor and indoor where the service is used. We always provide sufficient 3G and 4G coverage at the locations. We do our utmost to ensure optimum performance of our Push-to-Talk service.

We take care of on-site measurements in the first phase of your sales process, so that you can include our findings in your proposal.

On-site measurements >

prio-com.nl/en/on-site-measurements



one smart device
that makes radios and
pagers obsolete

C Integrated in one device

You can reduce the complexity of using multiple devices in the field such as radios, pagers, tablets and smartphones by having one robust smart device for all your business applications including Push-to-Talk. This lets you achieve a high degree of simplification in the business process and significantly reduce investments.



PrioCom Business Partner gives complete peace of mind

A End-to-End service

PrioCom provides mission-critical communication on 4G as a service. Our business partners equip mission-critical customers with a smart device with a Push-to-Talk application connected to the core of the T-Mobile network and, if desired, a control room environment. PrioCom business partners manage this end-to-end. They guarantee services that are appropriate for the customer, so that customers can always rely on the best support.

B Defects & maintenance when renting

If a device is broken, you want an immediate replacement without fuss. You want your PrioCom business partner to resolve this for you. They guarantee a service suitable for your organization, so that you can always count on the best support. Business partners use MDM to manage smart devices remotely. This means devices do not have to be handed in for adjustments. This saves considerable time and work.



**immediate
replacement of
defective devices**

C User training

The transition from traditional two-way radio to smart devices with Push-to-Talk, sometimes combined with business applications, entails a major change for users. In practice, it appears that many employees do not know how to use their smart device properly, for example, to make themselves well understood. This can lead to unsafe situations or even fatal incidents.

Our business partners can manage this change process for organizations and provide training for your employees, assisting them in adopting this new, more efficient way of communicating and working.



**training
for staff**

D Marketing & Sales support

We are experts in mission-critical communication and offer our business partners optimal support.

Optimal support



prio-com.nl/en/consultancy/

Want to know more?

Are you an end user and would you like to know more about our Push-to-Talk service? Then we would like to put you in contact with one of our business partners.

Do you want to be a PrioCom business partner? Call us for an appointment and we will be happy to discuss the options with you. You can call us on: +31 (0)88 250 04 88 or mail us at: info@prio-com.nl.

